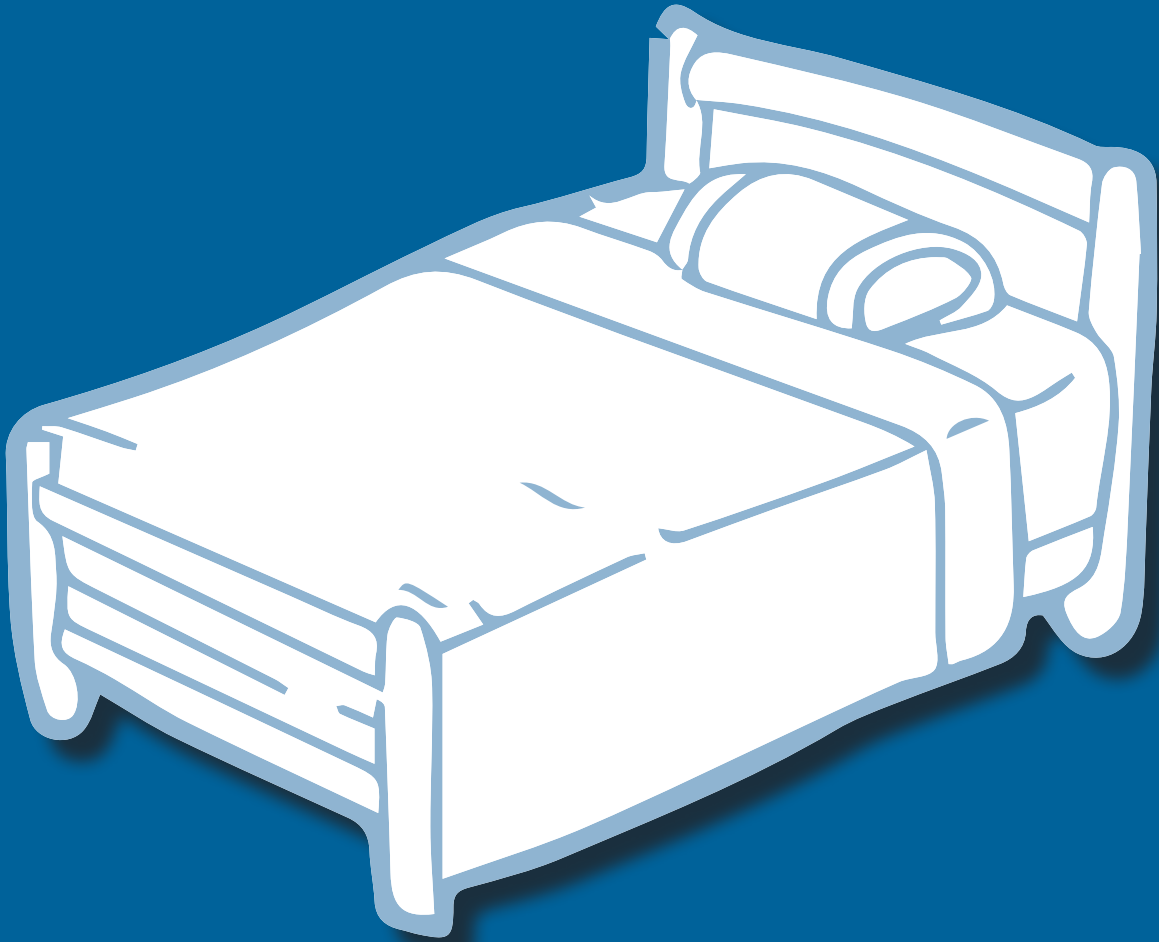
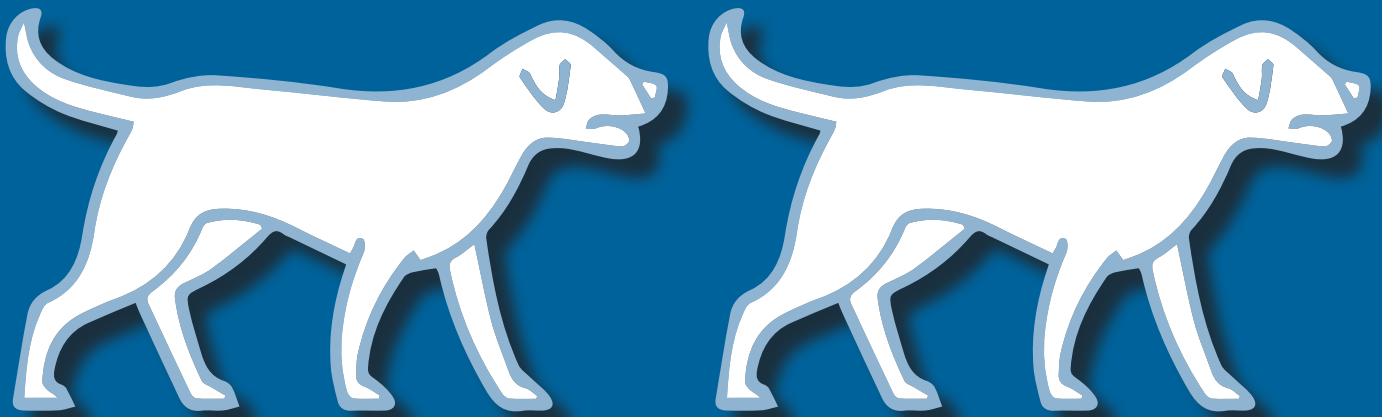


# JUST HOW LONG IS 6 FEET?



As long as one twin bed.

# JUST HOW LONG IS 6 FEET?



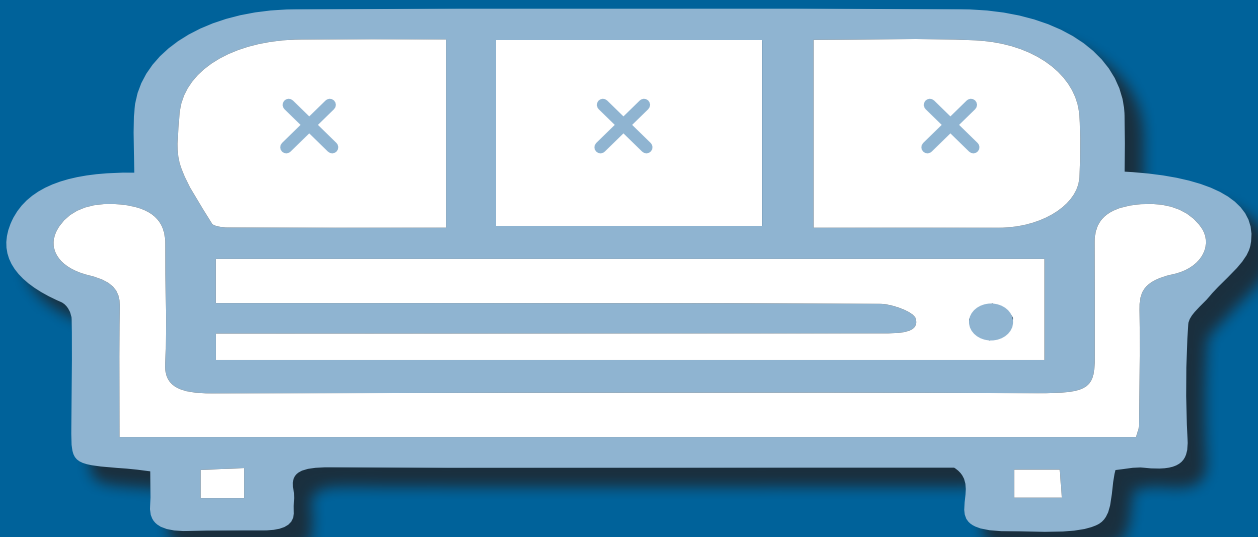
As long as two Golden Retrievers  
standing nose to tail.

# JUST HOW LONG IS 6 FEET?



The width of an average sedan.

# JUST HOW LONG IS 6 FEET?



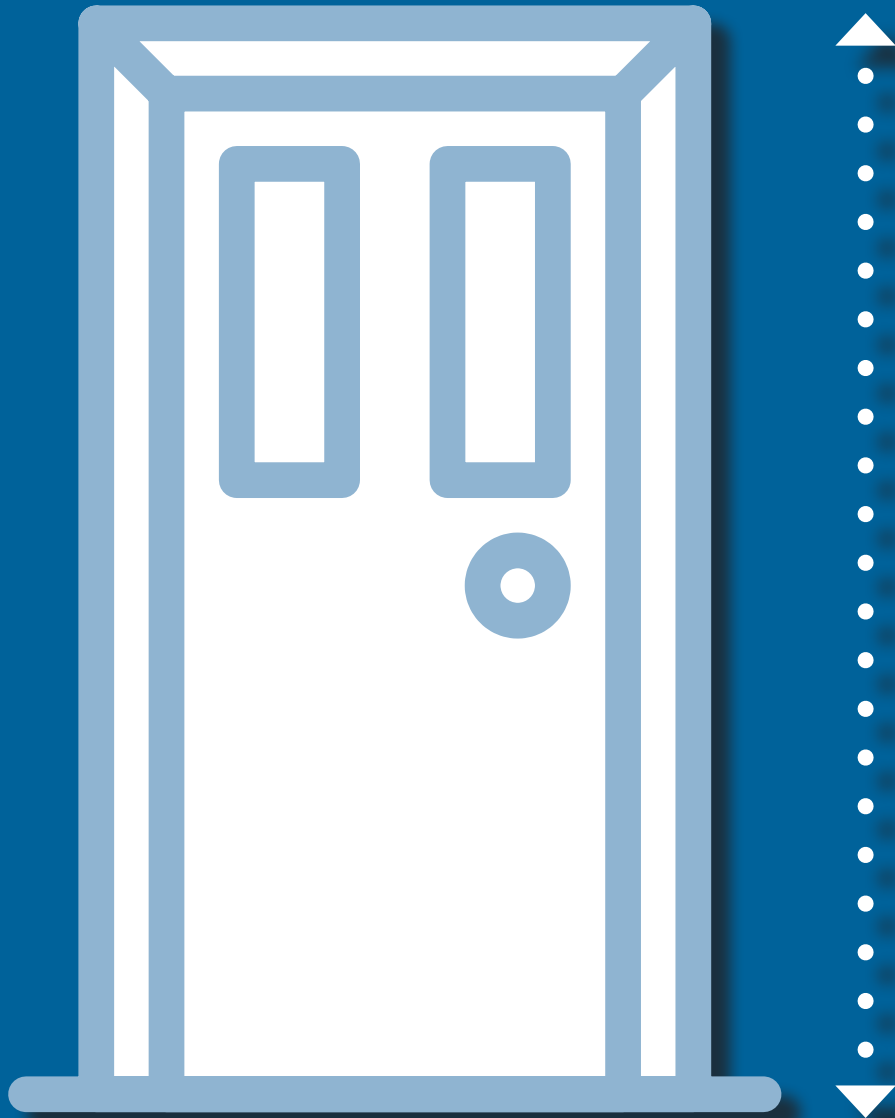
The length of an average 3-cushion sofa.

# JUST HOW LONG IS 6 FEET?



The height of an average Christmas tree.

# JUST HOW LONG IS 6 FEET?



The height of a door.

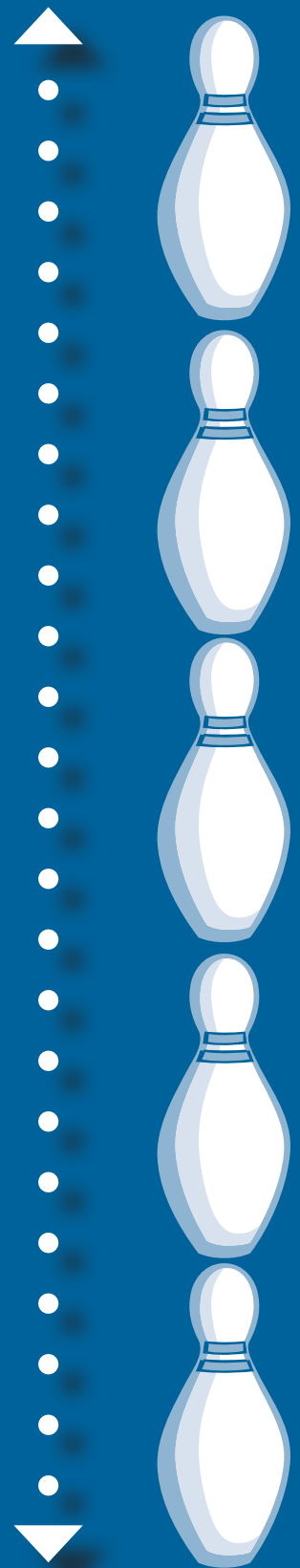
# JUST HOW LONG IS 6 FEET?

About  $\frac{1}{3}$  as tall  
as a giraffe.



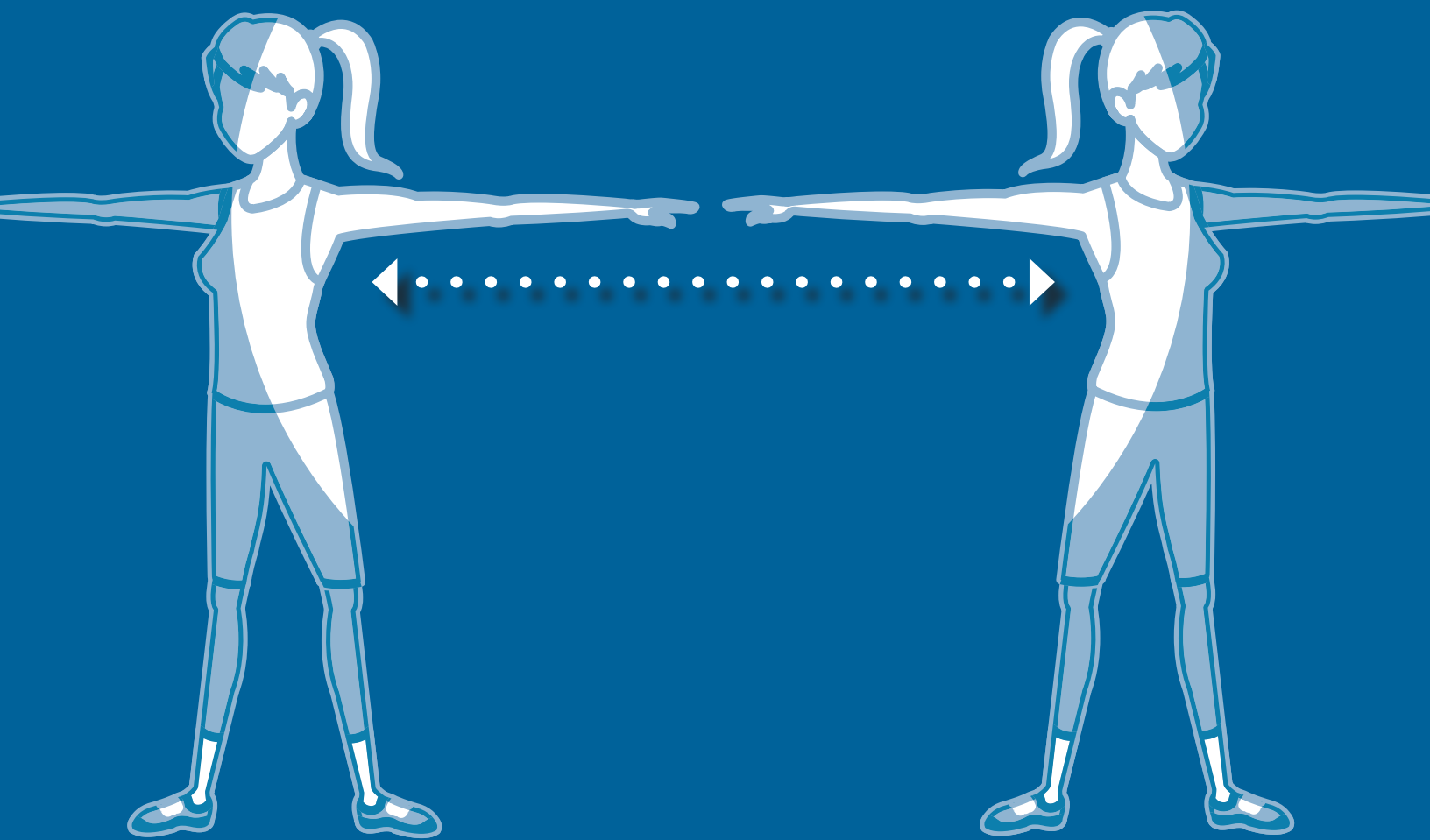
# JUST HOW LONG IS 6 FEET?

About 5 times as tall  
as a Bowling Pin.





# JUST HOW LONG IS 6 FEET?



About the span of you and your  
friend's outstretched arms.